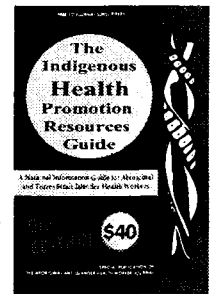


# READER SURVEY



We encourage as many people as possible to complete this survey.

Please feel free to photocopy this form for others to use, or go to [www.aihwj.com.au](http://www.aihwj.com.au) and complete this survey online. If you have any questions please call the *Journal* on Freecall 1800 888 575 or (02) 9311 2593

1. Are you  Aboriginal  
 Torres Strait Islander  
 Aboriginal and Torres Strait Islander  
 Non-Indigenous

2. Are you  A Health Worker  
 An Allied Health Professional  
 A Health Service Provider  
 A Resource Provider

3. Do you subscribe to the *Aboriginal & Islander Health Worker Journal*?  
 Yes  
 No

4. Do you find the *IHPR Guide – 6th Edition* useful?  
 Yes  
 No

5. What do you like most about the *IHPR Guide – 6th Edition*?
- .....
- .....
- .....

6. Would you recommend the *IHPR Guide – 6th Edition* to others?  
 Yes  
 No

7. Is the information in the *IHPR Guide – 6th Edition* easy to understand?  
 Yes  
 No

8. Do you find this resource culturally appropriate?  
 Yes  
 No

9. Some Special Features, such as the National Health Calendar, Awareness Ribbons, Immunisation Schedule and Useful Websites, were added to *IHPR Guide – 6th Edition*. Do you find them useful?  
 Yes  
 No

10. Is there anything you would like added to the Special Features section?
- .....

11. Would you use the *IHPR Guide – 6th Edition* on a regular basis?  
 Yes  
 No

12. How often do you think the *IHPR Guide* should be updated?  
 Every year  
 Every two years

13. Should the *IHPR Guide* continue to be produced?  
 Yes  
 No

14. What could be done to improve the *IHPR Guide – 6th Edition*?
- .....

15. Do you have any further comments on the *IHPR Guide – 6th Edition*?
- .....

16. Do you think the *IHPR Guide* should continue as a free supplement for subscribers of the *Journal*?  
 Yes  
 No

Thank you for taking the time to complete this Reader Survey.

Your responses will help to create an evaluation which will lead to future improvements and more resources for Health Workers and others in the Health Industry.

Please return your completed survey in one of three ways:

1. Fax to (02) 9311 2814
2. Mail to Aboriginal & Islander Health Worker Journal  
PO Box 502  
Matraville NSW 2036
3. Complete the survey online at [www.aihwj.com.au](http://www.aihwj.com.au)

